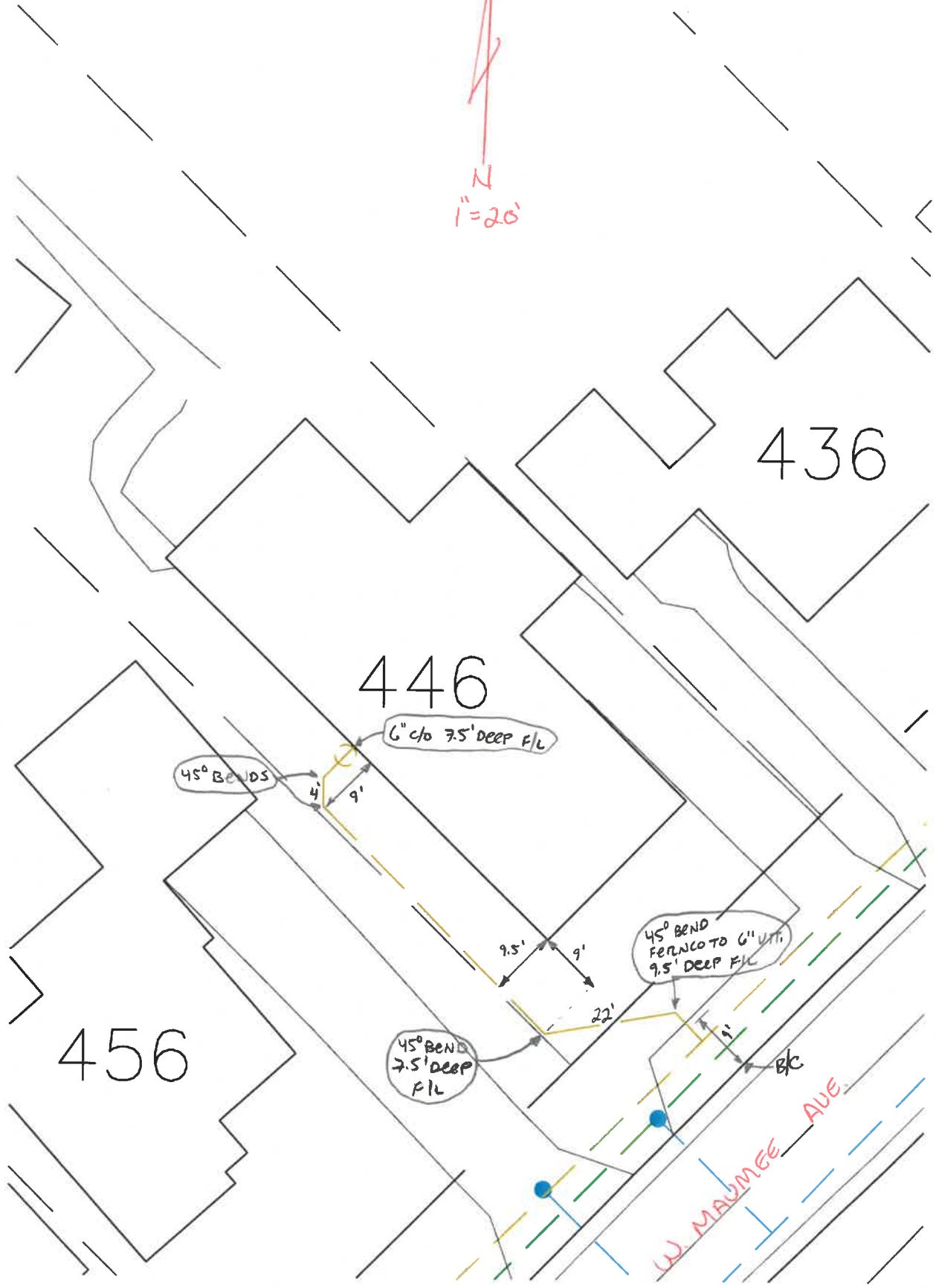


DATE: 6-28-13

INSTALLED BY: TRESSLER PLUMBING  
INSPECTED BY: MARY CROSSLAND



436

446

456

6" clo 7.5' DEEP FIL

45° BENDS

4' 9'

45° BEND  
FERUNCO TO 6" UTI  
9.5' DEEP FIL

45° BEND  
7.5' DEEP  
FIL

9.5' 9' 22'

W MAUMEE AVE

B/C